

CUSTOM ORB®

# CORRUGATED INSTALLATION GUIDE



QLD EXPANDED METALS COMPANY

## WORKPLACE HEALTH & SAFETY

At all times and on all sites, Health & Safety must be the first priority.

Installation may be from the roof or, perhaps, trestles and planks. Every job is different so assess each on its merits and always comply with Workplace Health and Safety Standards within your area.

## TOOLS REQUIRED

- Gloves
- Cordless Drill
- 1/4" Magnetic Tech Screw Bit
- L/H & R/H Tin Snips (Red & Green Handles, known as "Aviation Snips")



**Installation Disclaimer:** This guide is supplied for information purposes only.  
Technical support available on (07) 5341 8036.

Please follow our installation guidelines when installing Qemco products.  
Failing to follow the installation guidelines may void the warranty on the product.

## CLEAN CLOGGED GUTTERS

Scrub and rinse dirty gutters.



NOTE: When down pipes are connected to the water storage tanks, it is important to divert this dirty rinse water away to avoid contaminating the tank water.

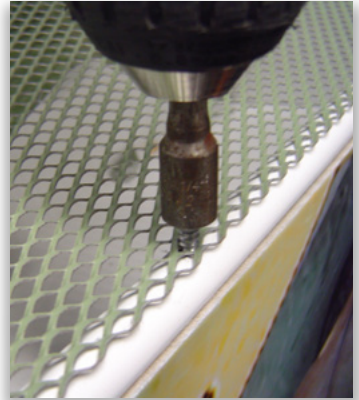
## LOCATE CORRI PROFILE

Locate corri profile on the roof & set gutter edge just back from the gutter lip.



## SCREW A 2ND ROW MESH HOLE

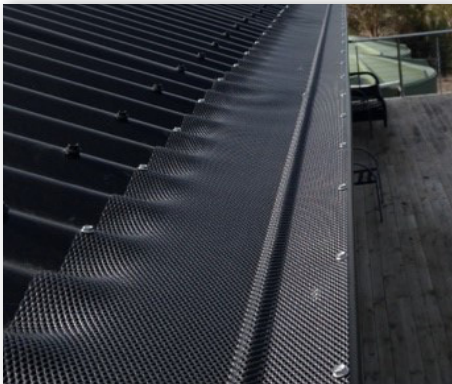
While holding mesh in location, screw through a 2nd row mesh hole into the gutter lip. On the roof side, fasten the mesh at every second rib of the corri. If you find the sheet has been stretched a little and doesn't fit the profiling, you may need to slightly mould the mesh and add a screw into every rib to help form it in place.



**NOTE:** Make sure never to over tighten any of the screws. The product only requires positive pressure to secure it in place. Class 4 Self drilling Fasteners are required as a 'minimum' under the Australian Standard for the building & construction industry.

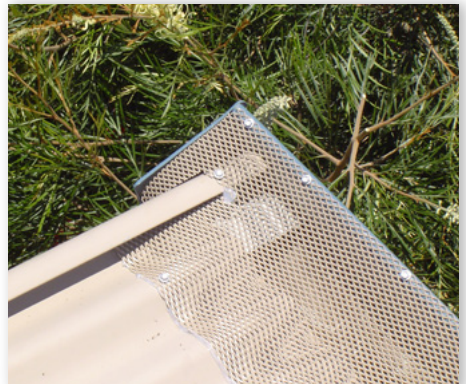
## SCREW TO THE ROOF

Over lap the ends of each strip & screw to the roof.



## SET & TRIM

Set & trim gutter end & screw into place.



## CUT & BREAK MESH TO SUIT

Cut & break mesh to suit corner profile. Screw & seal.



Cut in corner to suit.



## CLEAN DEBRIS, OVERLAP & SCREW IN PLACE

Make sure edges of the valley are clean of debris. Lay lengths of profiled valley product next to the valley & overlap by 15mm & screw. Insert longer leg side of the product under the valley edge. Squeezing the product, now clip the opposite side into the valley. Silicone seal edge.



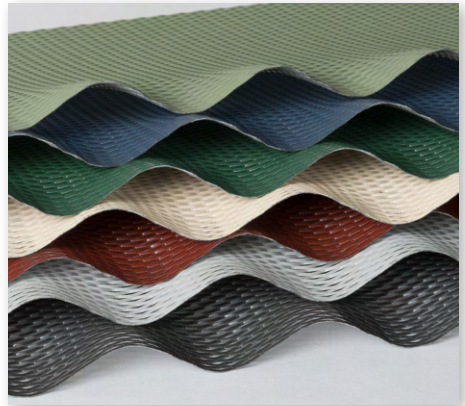


## CUT & SEAL



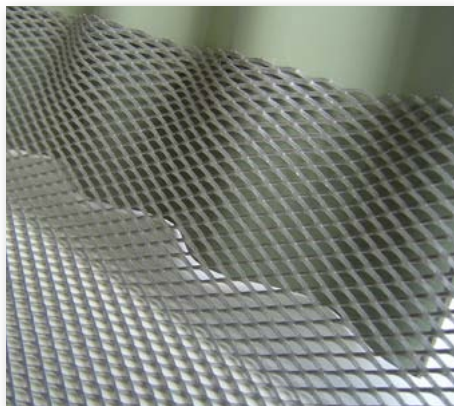
## BULLNOSE

Install to gutter as per standard installation.



## BULLNOSE (continued)

It is important that the product is manufactured with a fold to reduce the angle of the mesh. If the mesh is too steep above the gutter, water will overrun the mesh and not fall through into the gutter.



**NOTE:** It may be necessary to hand bend the product to aid in the installation if the gutter lip is lower in reference to the roof line. (See Tips Section)

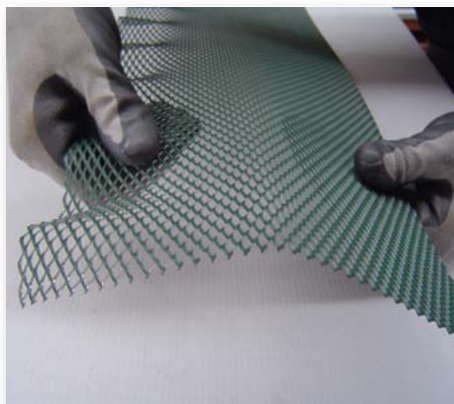
## TIPS

Hand bending.

**NOTE:** Always clean up after you have completed the installation. Off-cuts are sharp & could cause injury.

### **IMPORTANT: Swarf Staining.**

Swarf particles, if left on the surface, will corrode and cause rust stains which will detract from the finished appearance of the product. The roof should be blown, vacuumed, swept or rinsed progressively to remove loose particles.





[gemco.com.au](http://gemco.com.au)

[E admin@gemco.com.au](mailto:admin@gemco.com.au)

[PO](#) PO Box 5010, Baring QLD 4551

**ABN:** 42678 107 250

©Copyright Queensland Expanded Metals Company Pty Ltd

[gemco.com.au](http://gemco.com.au)